



ALLEGANY COLLEGE
===== *of* MARYLAND =====

Windows Devices

Wireless Network
Connection Instructions

Connecting a Windows Device to the ACM Wireless Network

Menu options and network settings may differ based on device and version of Windows.

Before you start:

- ▶ You must be aware of and abide by [ACM Technology Policies](#)
- ▶ You will need your ACM Self-Service credentials in order to connect to ACM Wi-Fi.

**If you are not a student or ACM Faculty/Staff member, you may connect to the [ACM Guest Network](#)*

- ▶ **Right-click the Wireless Icon** from your taskbar in the bottom right corner, Or click the **Windows icon** in the bottom left corner, select the **Settings icon** (gear), then click on **Network & Internet**
- ▶ Under **Change your Network Settings**, choose **Set up a new connection or network**
- ▶ Select **Manually connect to a wireless network** then click **Next**
- ▶ Select **ACM**



- ▶ **Enter the following:**
 - ▶ **Network name:** ACM
 - ▶ **Security type:** WPA2-Enterprise
 - ▶ **Encryption type:** AES
 - ▶ Make sure **Connect Automatically** box is checked

A screenshot of the Windows network setup dialog box titled "Enter information for the wireless network you want to add". It contains the following fields and options:

- Network name: ACM
- Security type: WPA2-Enterprise
- Encryption type: AES
- Security Key: (empty field) with a "Hide characters" checkbox.
- Start this connection automatically
- Connect even if the network is not broadcasting
- Warning: If you select this option, your computer's privacy might be at risk.
- Buttons: Next, Cancel

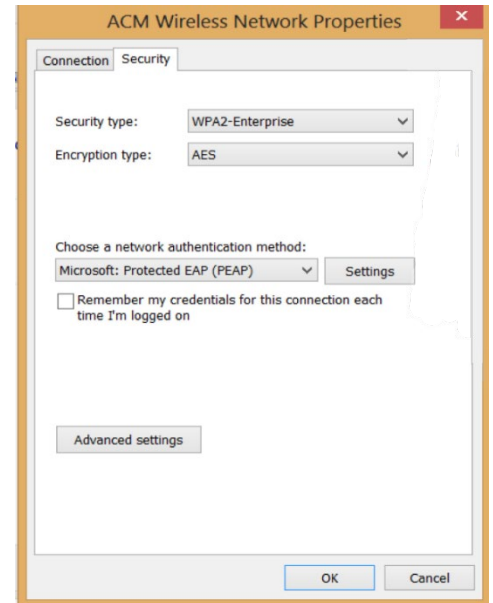
- ▶ Click **Next**



- ▶ Choose **Change connection settings**

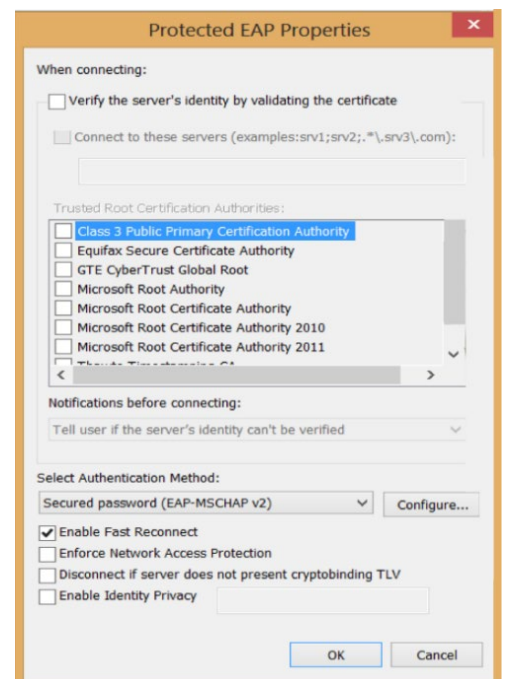
► In the **ACM Wireless Network Properties** window:

- click the **Security tab**
- **Uncheck** Remember my credentials for this connection each time I'm logged on
- Click **Settings** (above Remember credentials...checkbox)



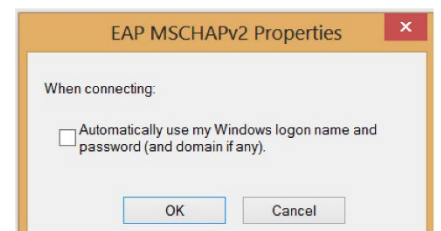
► In the **Protected EAP Properties** window:

- **Uncheck** Verify the server's identity by validating the certificate
- Click **Configure** (next to Select Authentication Method)

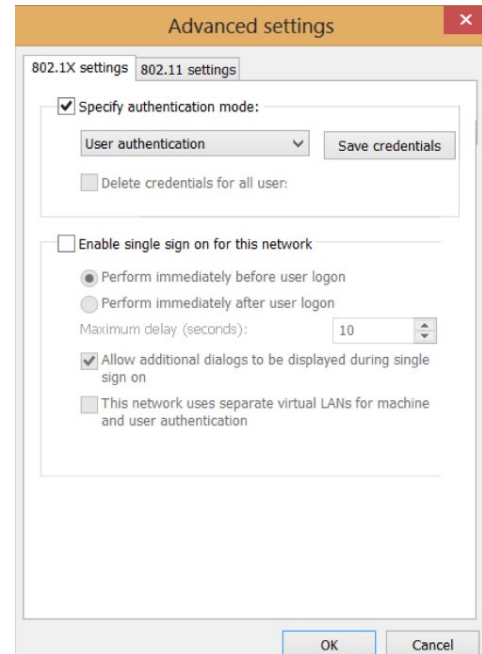


► In the **EAP MSCHAPv2 Properties** window:

- **Uncheck** Automatically use my Windows log on name and password (and domain if any)
- Click **OK**
- Click **OK** again on the **Protected EAP Properties** window

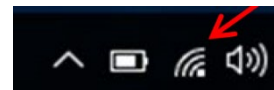


- ▶ This brings you back to the **ACM Wireless Network Properties** window:
- ▶ Click on the **Advanced Settings button** (bottom left)
- ▶ In the **Advanced Settings** window:
 - ▶ **Check** Specify authentication mode
 - ▶ Select **User authentication** from the dropdown menu
 - ▶ Click **Save credentials** button
 - ▶ You will be prompted for a username and password.
Enter your ACM Self-Service username and password.



- ▶ Click **OK** on the **Advanced Settings** window
- ▶ Click **OK** in the **ACM Wireless Network Properties** window
- ▶ Click **Close** in the **Manually connect to the wireless** window
- ▶ **Close** the **Network and Sharing Center** window

- ▶ The network icon should now indicate that you are connected



** This process may take a few minutes.*

If your icon does not change to indicate you are connected, click on it, choose ACM from your Wi-Fi list, and click Connect.

If you need further assistance, you may find it here:

Helpdesk: Technologies Building Room T115

301-784-5555

Students:

<https://www.allegany.edu/it-helpdesk/student-it-help.html>

Faculty and Staff:

<https://www.allegany.edu/it-helpdesk/employee-it-help.html>