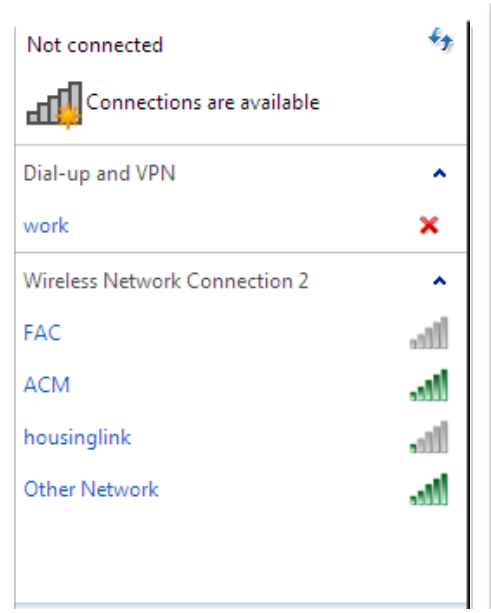


Allegany College of

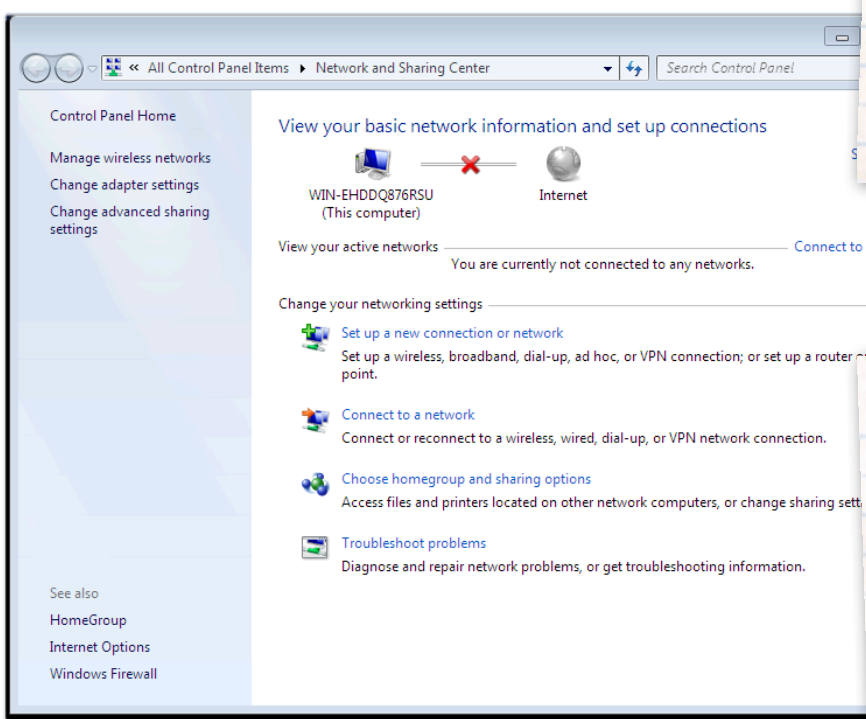


Maryland Wireless Network

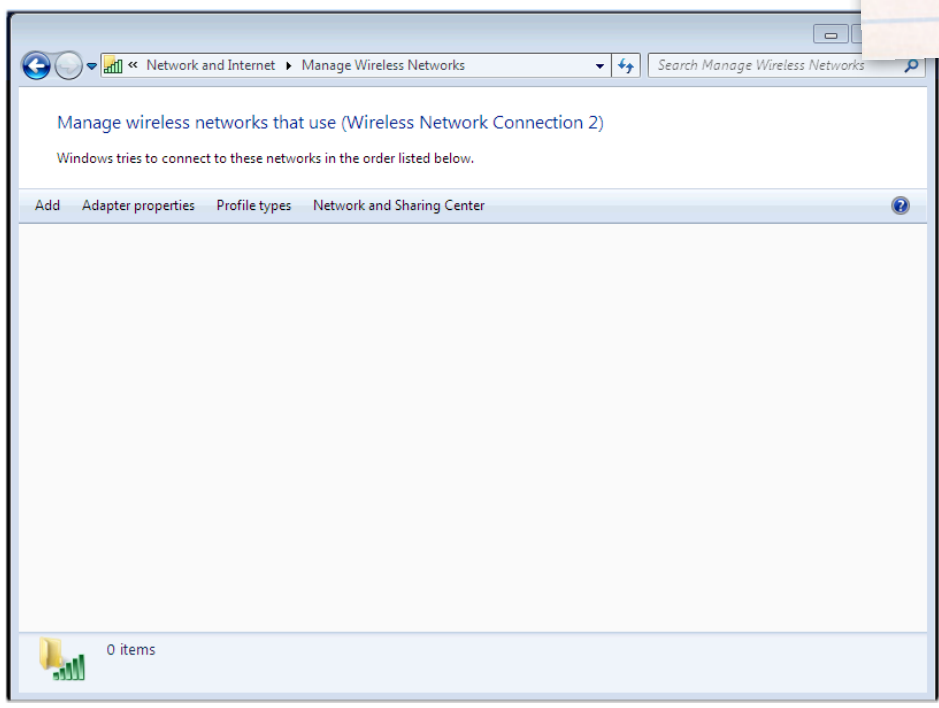


Windows 7

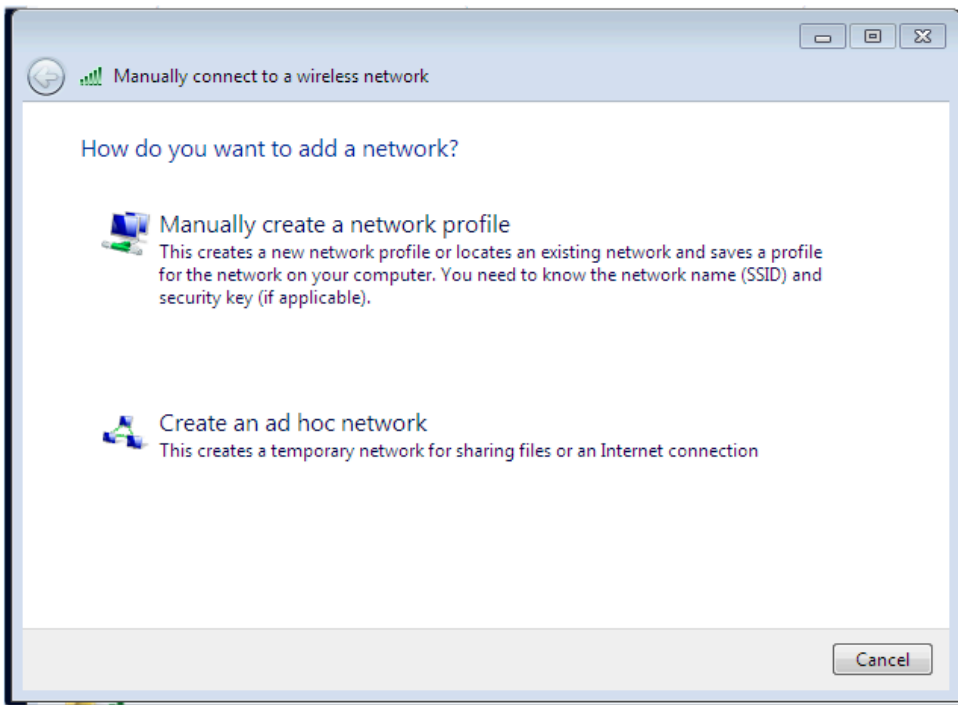
These instructions are for Windows 7 machines in which Windows is managing the wireless network connection. 7 should see the ACM SSID when clicking on the wireless icon in the task bar notification area. Click on the "Open Network and Sharing Center" link.



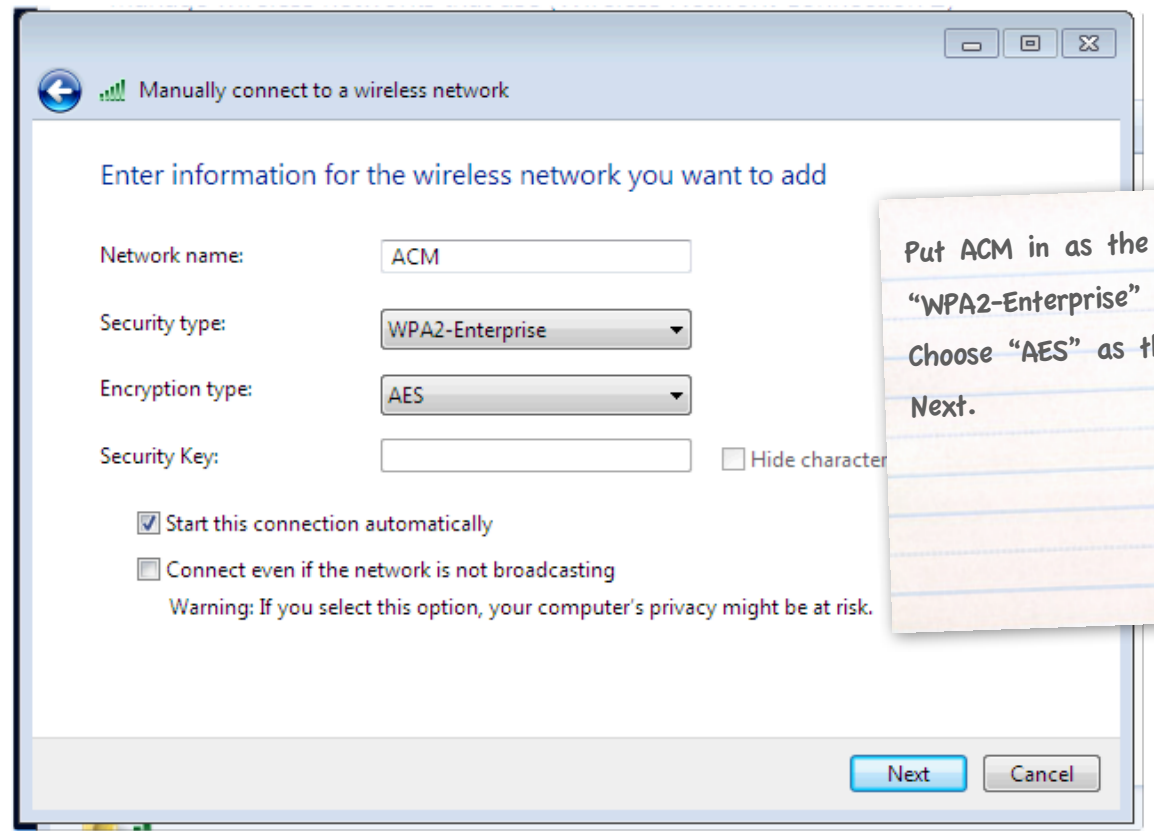
You should see a link called "Manage Wireless Networks" Click on this tab.



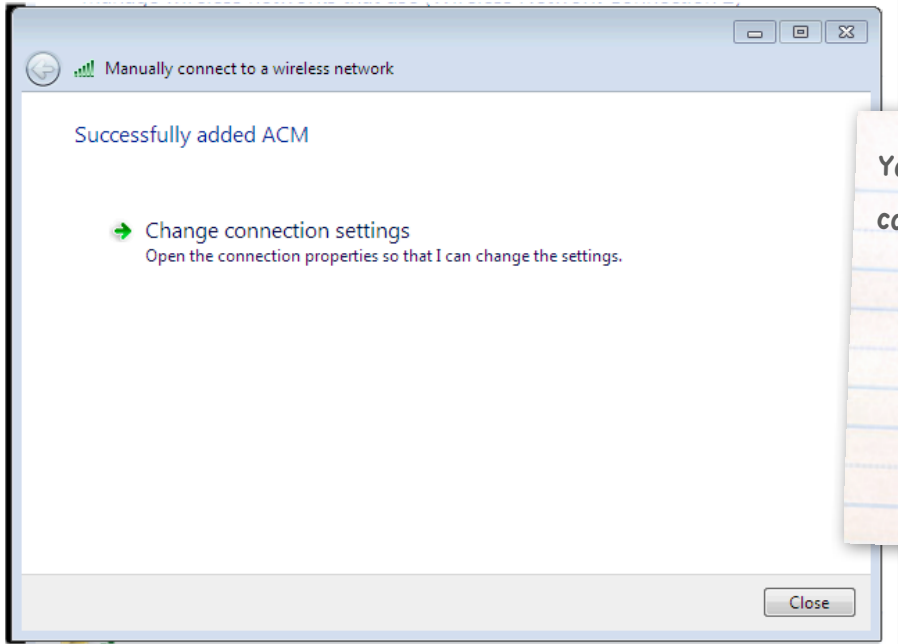
Click Add



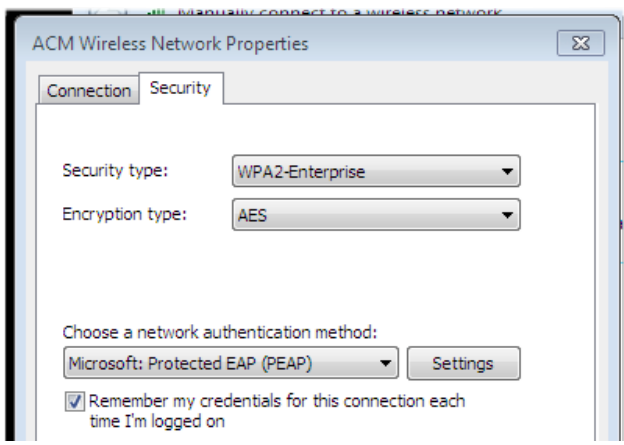
Choose "Manually create a network profile"



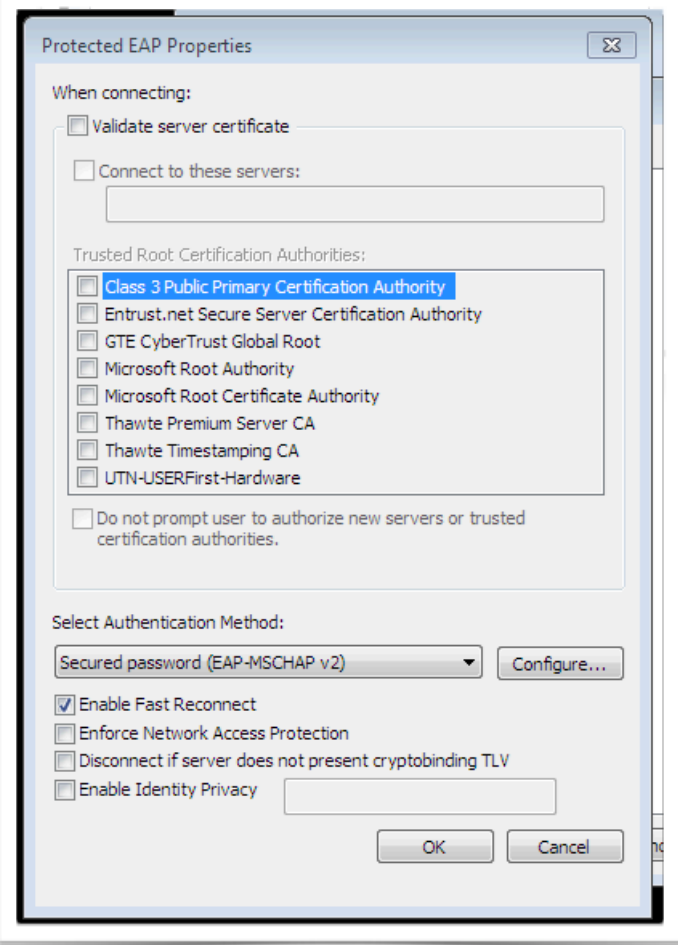
Put ACM in as the "Network name". Choose "WPA2-Enterprise" as the Security Type. Choose "AES" as the Encryption Type. Click Next.



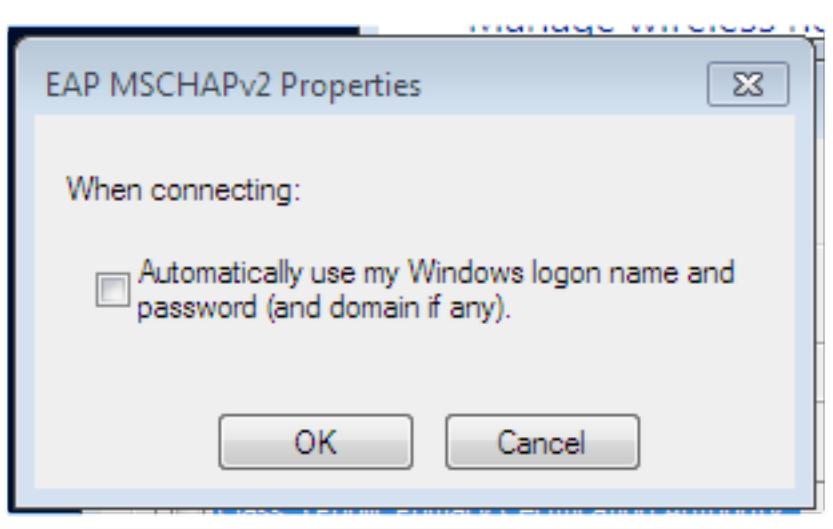
You will see this screen next. Click "Change connection settings".



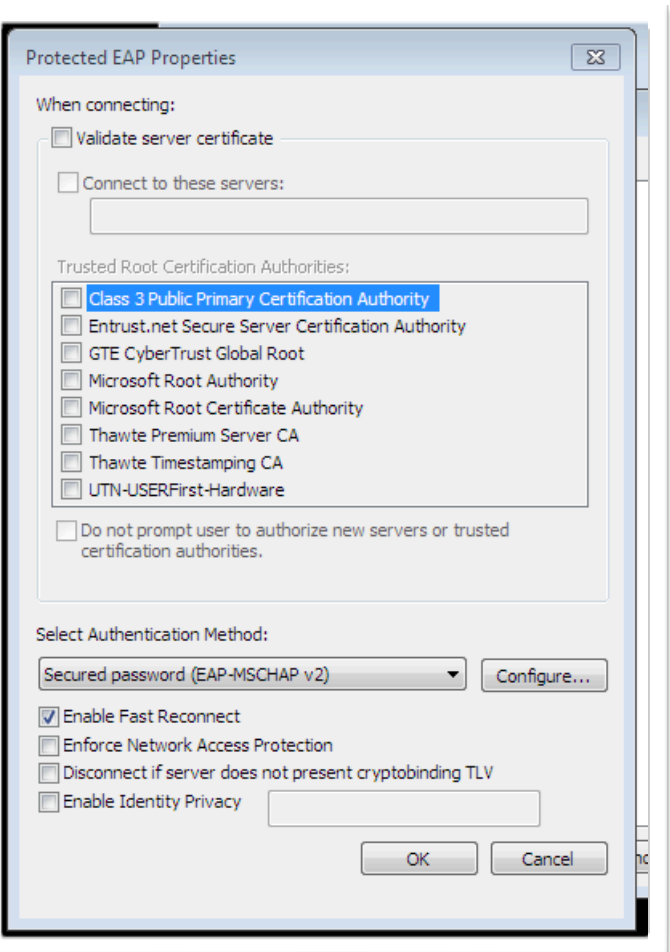
Choose the Security tab. Make sure PEAP is chosen as the authentication method. Click on Settings. It would also be a good idea at this time to uncheck the box that says "Remember my credentials for this connection each time I'm logged on".



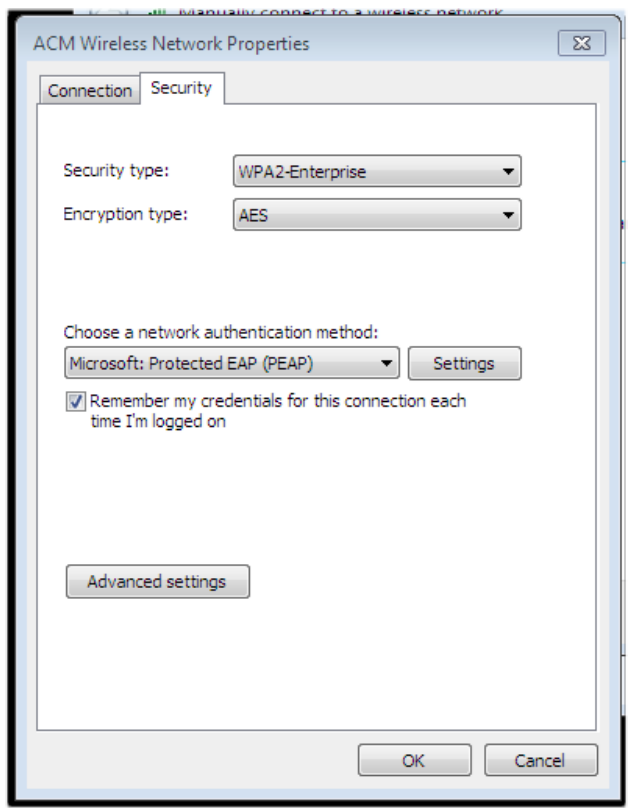
Uncheck "Validate server certificate".
Make sure Authentication Method is set to EAP-MSCHAP v2. Click on Configure.



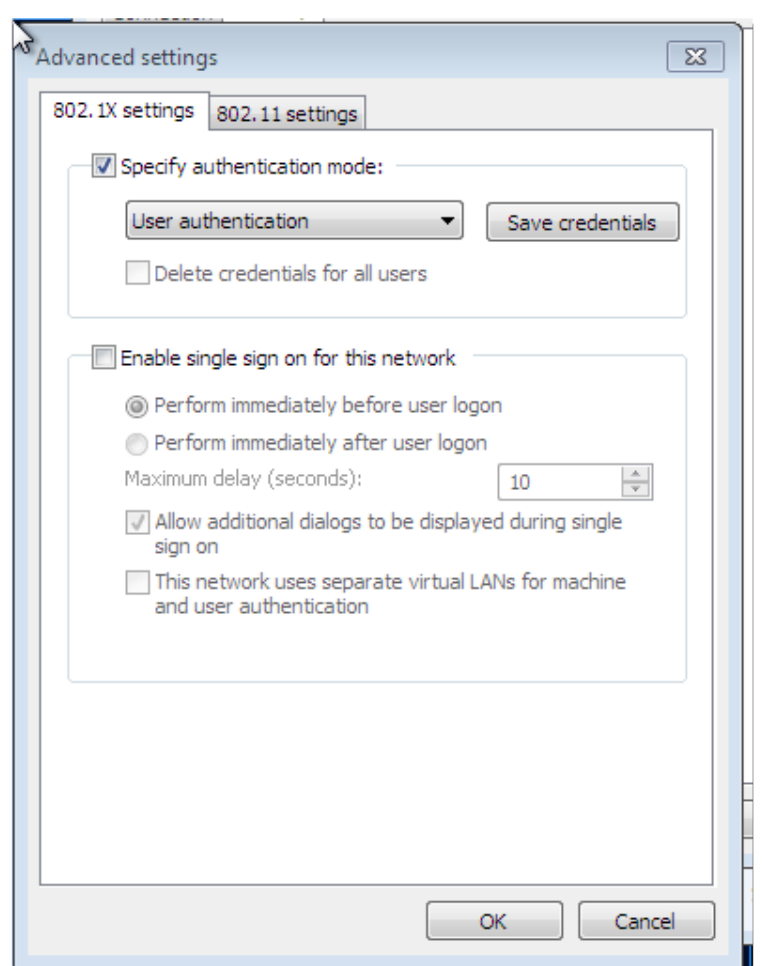
Uncheck the box that says "Automatically use my Windows logon name and password". Click OK.



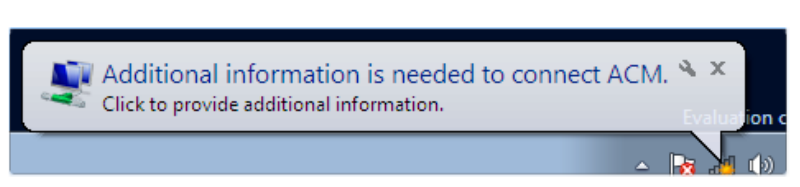
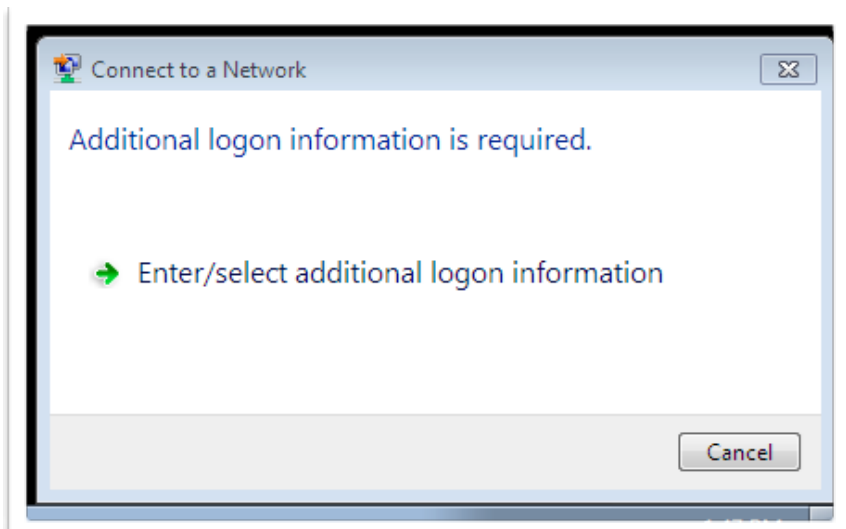
Click OK on this window.



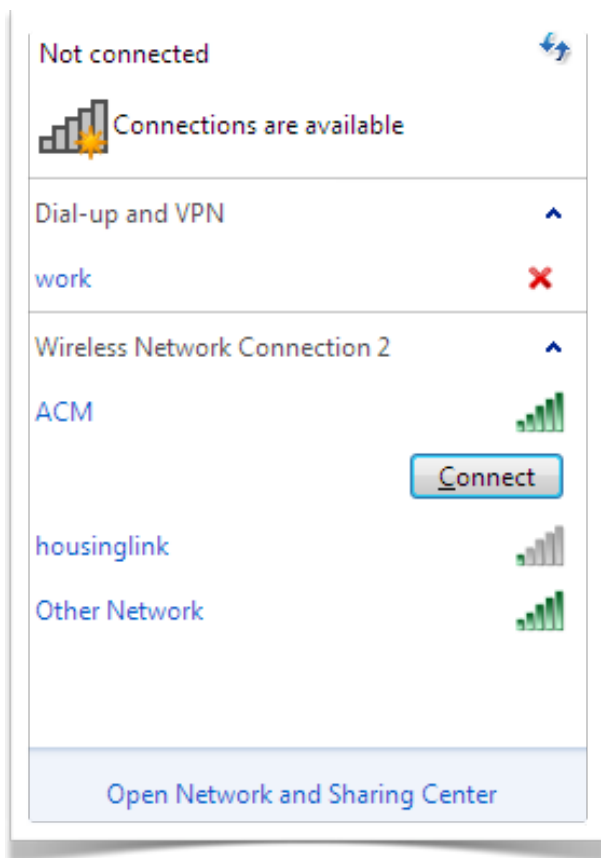
Click on the Advanced Settings button.

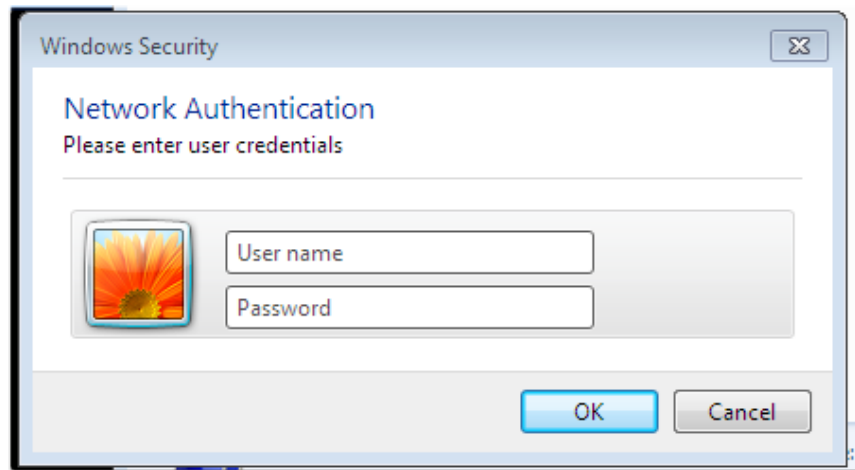


Check the "Specify authentication mode" check box and choose "User authentication". Click OK. Click OK again.

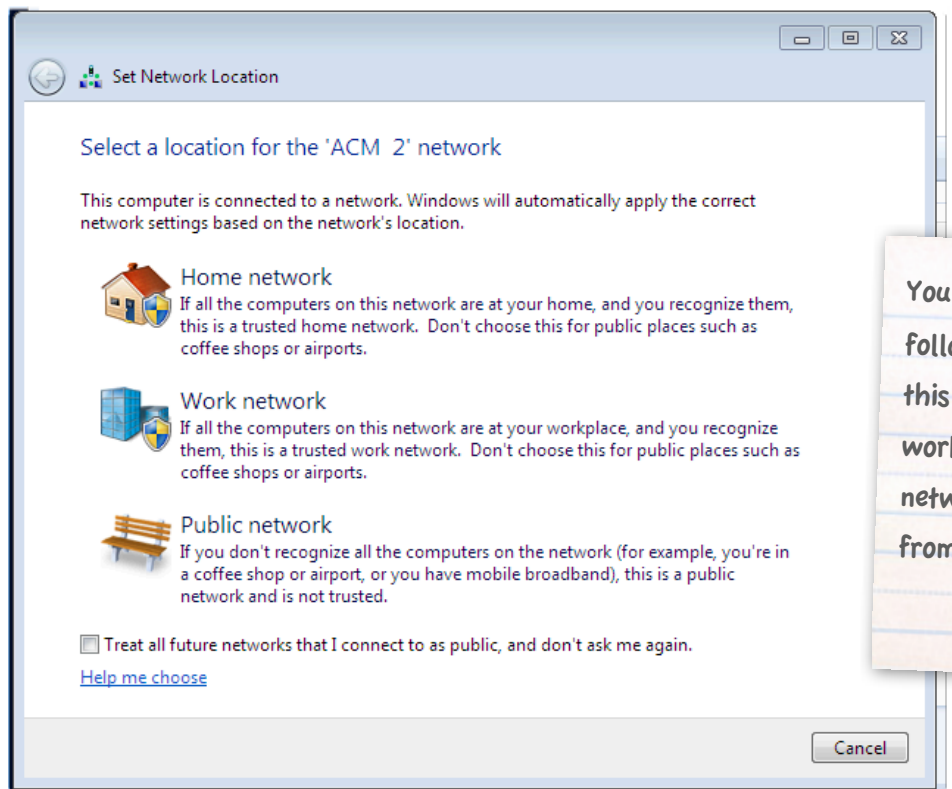


You may get a box that looks similar to one of these. If not, click on the wireless icon and choose connect when highlighting the ACM network.





Put your credentials in and click OK.



You may get a screen that looks like the following asking you what type of network this is. While choosing any of them will work, I'd recommend choosing "Public network" as this will provide more protection from other wireless users.

If you need further assistance, you may find it here:

Students:
<http://student.allegany.edu>
(or call 301-784-5444)

Faculty and Staff:
<https://ithelpdesk.allegany.edu>
(or call campus extension 5444)