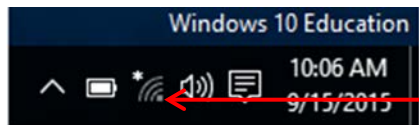


Allegany College of



Maryland Wireless Network

Windows 10



These instructions are for Windows 10 machines, in which Windows is managing the wireless network connection.

1. From your Windows 10 Start Screen, choose Desktop. From your Desktop, right click on your Connection Icon. Choose Open Network and Sharing Center.

2. Under 'Change your network settings' choose set up a new connection or network.

Change your networking settings



Set up a new connection or network

Set up a broadband, dial-up, or VPN connection; or set up a router or access point.

3. Choose 'Manually connect to a wireless network'



Manually connect to a wireless network
Connect to a hidden network or create a new wireless profile.

4. Then choose next

5. Fill in the following:

Network name: ACM

Change the security type to WPA2-Enterprise.

Then choose 'next'

Enter information for the wireless network you want to add

Network name:

Security type:

Encryption type:

Security Key: Hide characters

Start this connection automatically

Connect even if the network is not broadcasting

Warning: If you select this option, your computer's privacy might be at risk.

Next

Cancel

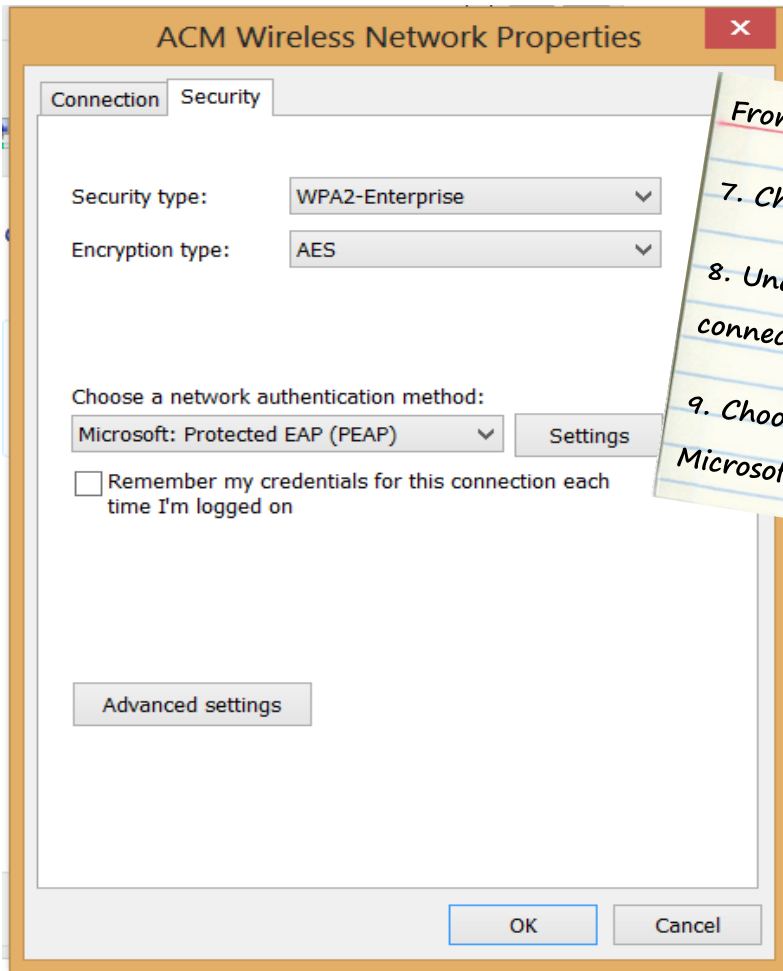
6. Then choose, 'Change connection settings'

Successfully added ACM

→ Change connection settings

Open the connection properties so that I can change the settings.

From here you will see ACM Wireless Network Properties.

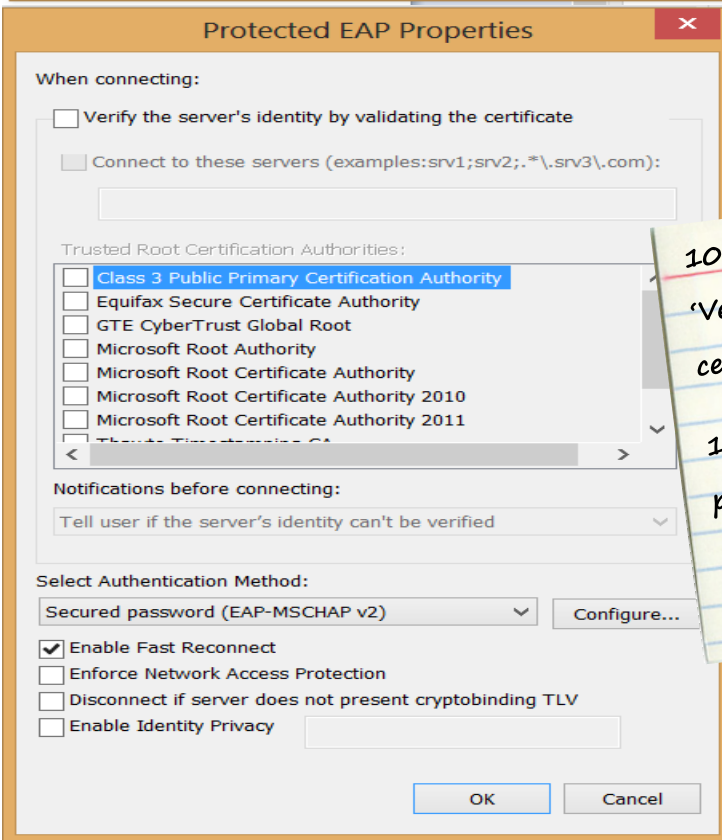


From the 'ACM Wireless Network Properties'

7. Choose the Security Tab

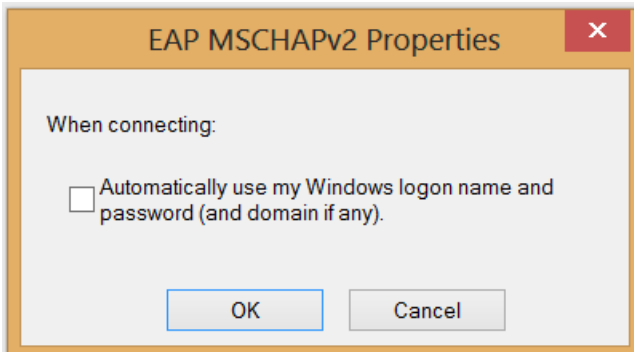
8. Uncheck 'Remember my credentials for this connection each time I'm logged on.'

9. Choose, 'settings' (next to the drop down Microsoft: Protected EAP (PEAP))



10. In the 'Protected EAP Properties' uncheck the 'Verify the server's identity by validating the certificate'

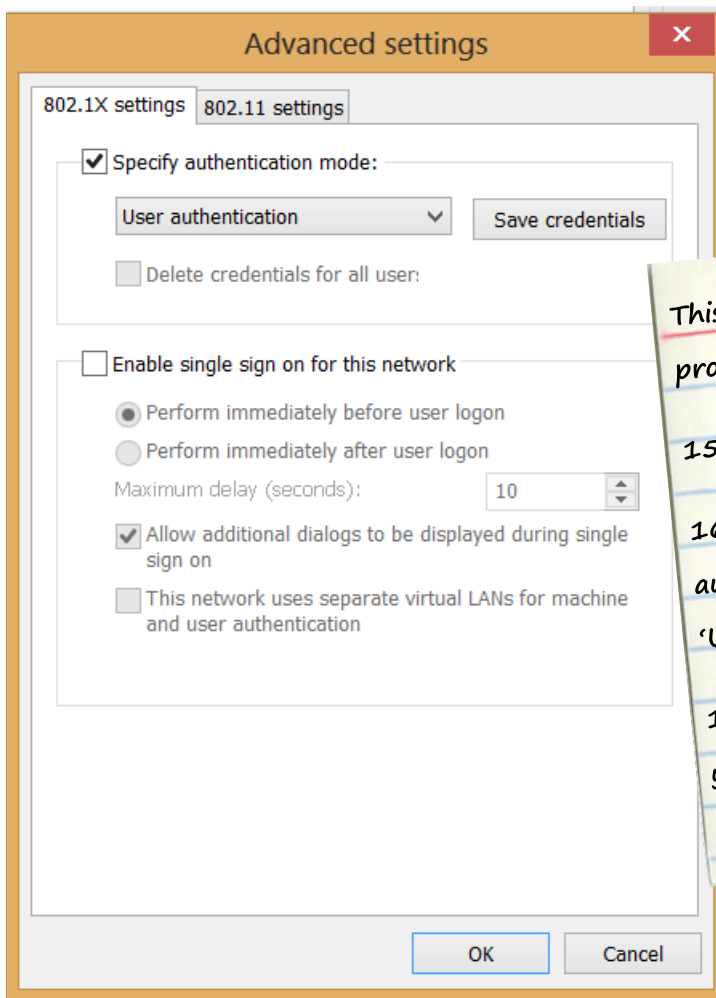
11. Choose 'Configure' (next to the secured password).



12. Under the EAP-MSCHAPv2 window, Uncheck the 'Automatically use my Windows log on name and password (and domain if any)'

13. Choose OK

14. Choose OK (again) on the 'Protected EAP Properties' window



This brings you back to the 'ACM wireless network properties'

15. From here, choose 'Advanced settings'

16. Under 'Advanced settings' CHECK 'Specify authentication' then, from the down arrow, choose 'User Authentication'

17. Choose 'Save credentials' and it will prompt you for your username and password. This will be your ACM username and password.

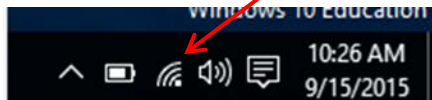
18. Choose OK on the username and password window.

19. Choose OK on the Advanced Settings window.

20. Choose OK on the ACM Wireless window.

21. Choose Close on the manually connect to the wireless menu.

22. Close your Network and Sharing Center window.



Your Network Icon should now indicate that you are connected. This process may take a few minutes.

If your icon does not change to indicate you are connected, click on it, choose ACM from your Wi-Fi list and click connect.

If you need any additional help please check with the following:

Students: <http://student.allegany.edu> or call 301-784-5444

Faculty and staff:

<https://ithelpdesk.allegany.edu> or call ext. 5444 from any campus phone.

*Please note:

You can forget the ACM network by going into your network settings, choosing manage wi-fi settings, go under Manage Known networks, choose ACM and click on forget. This does not delete the profile from your machine. If you want to delete the profile see below.

Once you connect to any Wi-Fi network on a windows 10 machine, you cannot easily delete the network from the windows interface. To delete a wifi network you will need to access the command line prompt and type `netsh wlan delete profile name = "profilename"` In this case, "profilename" = "ACM"