



**ALLEGANY COLLEGE**  
*of MARYLAND*  
 BEDFORD COUNTY CAMPUS

**18 North River Lane**  
**Everett, PA 15537-1410**

**814-652-9528**  
**info@allegany.edu**

**www.allegany.edu**



**#EngageYourFuture**

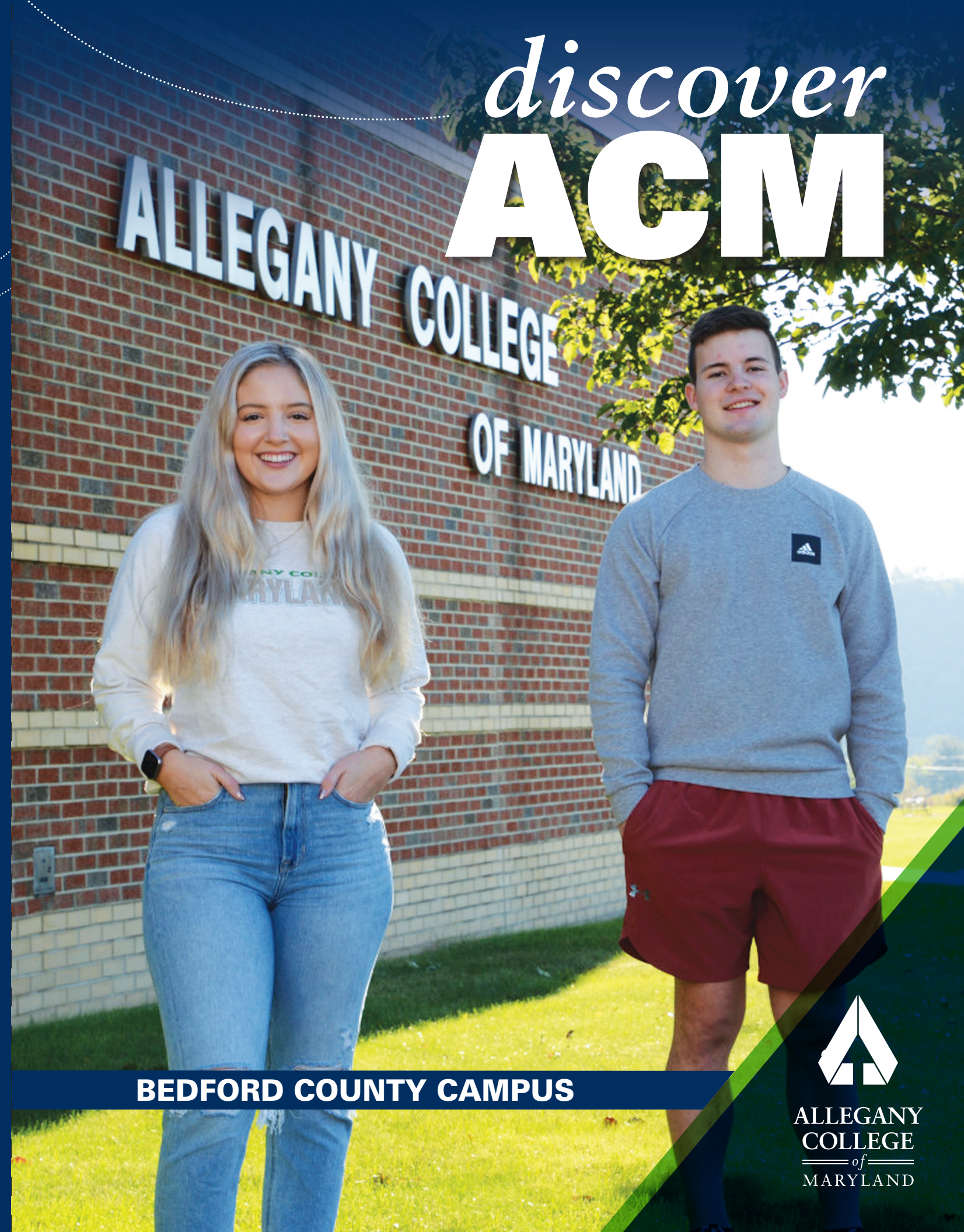
Allegany College of Maryland does not discriminate on the basis of age, ancestry/national origin, color, disability, gender identity/expression, marital status, race, religion, sex, or sexual orientation in matters affecting employment or in providing access to programs and activities.

For inquiries related to this policy, Title IX, and ADA/504, please contact:

Dr. Renee Conner  
 Dean of Student and Legal Affairs  
 Title IX Coordinator  
 ADA/504 Coordinator  
 301-784-5206 / rconner@allegany.edu

Allegany College of Maryland is required to inform prospective and current students of important College policies including Non-Discrimination, Title IX, Child Abuse Mandated Reports, Clery Act, Heroin & Opioid, Drug and Alcohol Use, Academic Disabilities, FERPA, Accreditation, and Medical Disclosure Procedure. For full details on these key policies, please visit the Allegany College of Maryland website at [allegany.edu/policy-mandates](http://allegany.edu/policy-mandates).

*discover*  
**ACM**



**BEDFORD COUNTY CAMPUS**



**ALLEGANY**  
**COLLEGE**  
*of*  
**MARYLAND**

*We will be the college of choice that transforms lives, strengthens communities, and makes learners the center of everything we do.*

## **OUR STUDENTS** *describe ACM best...*

“

**“Affordable”**

Lawrence Waters



**“Sense of Community”**

— Kristin Propst

“

**“Friendly”**

Jacob Wagner



Celebrating more than

**30 YEARS**

of quality services, quality facilities,  
and quality people.

# **READY TO** *Engage Your Future?*

**ACM is moving forward.**  
*Join us.*



# QUALITY PROGRAMS.

## Quality people.

Recently, our students have transferred to **81 colleges and universities** in **25 states**. Partnerships and agreements between ACM and popular four-year colleges and universities smooth the transfer pathways.

### ACADEMIC MAJORS

Bedford County Campus at Everett

#### ASSOCIATE DEGREE PROGRAMS

- Applied Technical Studies
- Arts and Sciences (Sciences)
  - Psychology AOC
- Business Administration
- Business Management
- Computer Technology
  - Cybersecurity AOC
  - Technical Support AOC
- Criminal Justice
- Data Analytics
- General Studies
- Nursing

#### CERTIFICATE PROGRAMS

- Business Accounting
- Business Entrepreneurship
- Business Marketing and Sales
- Business Supervision
- Computer Technology
  - Cybersecurity
  - Technical Support
- Criminal Justice
- Data Analytics

**OTHER PROGRAMS:** Although not all program options offered through Allegany College of Maryland are available at the Bedford County Campus, courses can be taken towards many programs/degrees at this campus then completed at the Cumberland Campus or at another four-year college or university. To view a full list of ACM's academic programs, visit [allegany.edu/majors](http://allegany.edu/majors).

Additionally, other career and transfer programs may be offered in the future to satisfy the growing needs of Bedford County.

AOC = Area of Concentration

#### LETTERS OF RECOGNITION

- Business Management
  - Accounting
  - Entrepreneurship Training
  - First-Line Supervision
  - Marketing and Sales Training
- Criminal Justice/Corrections

#### BEDFORD COUNTY TECHNICAL CENTER

- Nursing (program clinicals)
- Articulated Programs
  - Automotive Technology
  - Culinary Arts
  - Forest Technology
  - Selected Allied Health Programs

#### EARLY COLLEGE

High school students are eligible to enroll in college classes through Allegany College of Maryland. Students in the Early College program receive a discount off their lowest tuition rate.

# Start **HERE**

# Grow **HERE**

# Get **THERE**

Allegany College of Maryland is proud of its collaboration with colleges and universities, which result in articulation agreements and partnerships that create additional opportunities for transfer students. The use of the word "articulation" represents that the College has formalized an agreement with another higher education institution supporting the transfer of credit between institutions.

**Current articulation agreements are in place with the following colleges/universities for programs offered at the Bedford County Campus:**

#### ARTICULATION INSTITUTIONS

- California University of Pennsylvania
- Chamberlain College of Nursing
- Frostburg State University
- Geneva College
- Mount Aloysius College
- Potomac State College of West Virginia University
- Saint Francis University
- Seton Hill University
- Shippensburg University of Pennsylvania
- West Virginia University

In addition, the college has established a number of partnerships with other colleges, universities, and high schools which represent a spirit of collaboration but do not necessarily guarantee transfer of credit like an articulation agreement. Students who plan to continue their education at a four-year college or university after graduating from Allegany College of Maryland should seek assistance from a transfer advisor in the Student Services Office. With proper planning, ACM credits are easily transferrable.

#### IN PENNSYLVANIA

- Clarion University of Pennsylvania
- Duquesne University
- Indiana University of Pennsylvania
- Juniata College
- Lock Haven University
- Pennsylvania State University
- Slippery Rock University
- University of Pittsburgh

#### IN WEST VIRGINIA

- Alderson-Broaddus University
- Fairmont State University
- Marshall University
- Shepherd University

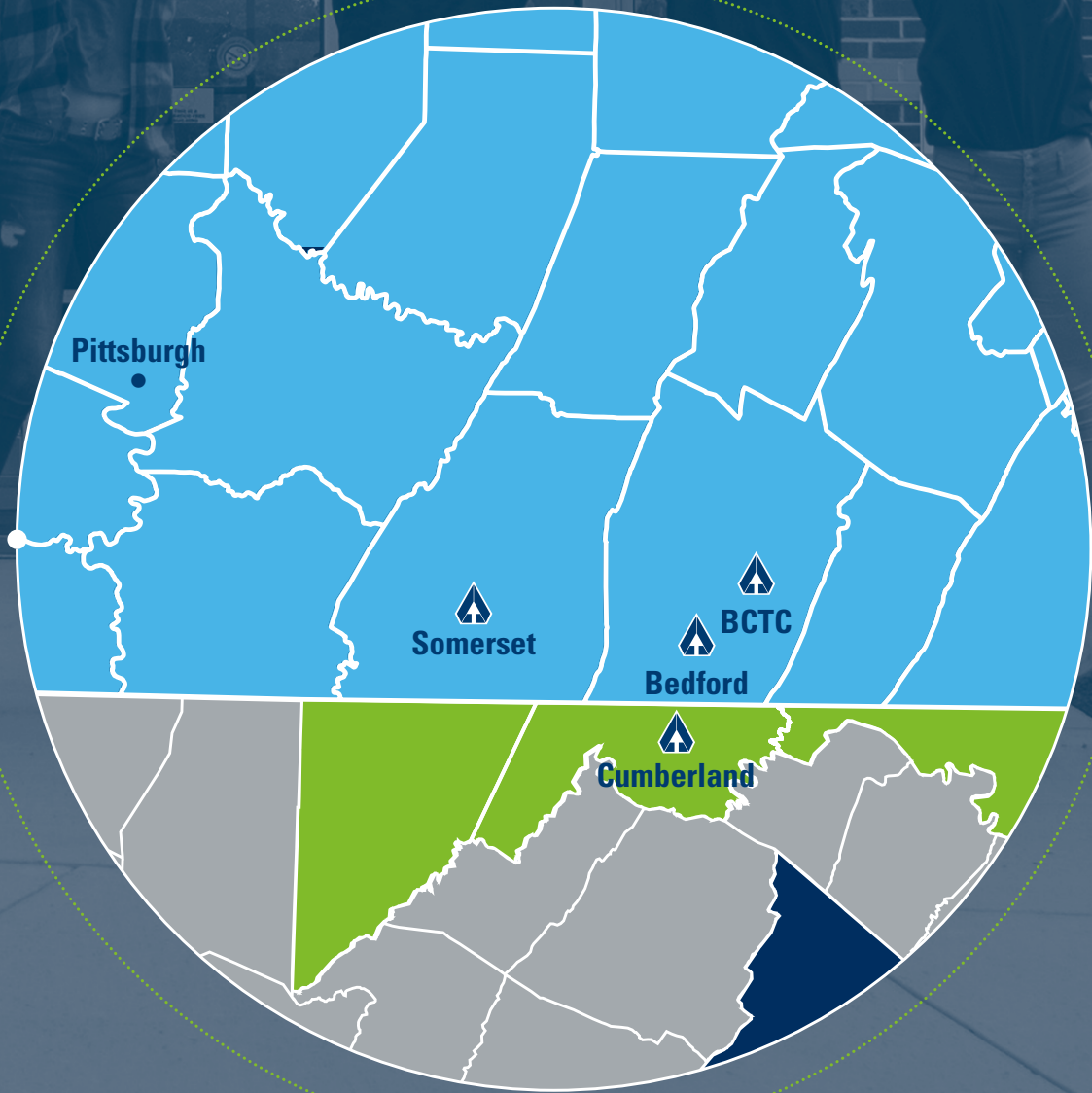
#### IN MARYLAND

- Bowie State University
- Morgan State University
- Salisbury University
- Towson State University
- University of Baltimore
- University of Maryland, Baltimore (City)
- University of Maryland, Baltimore County
- University of Maryland, College Park
- University of Maryland, Eastern Shore
- University of Maryland Global Campus

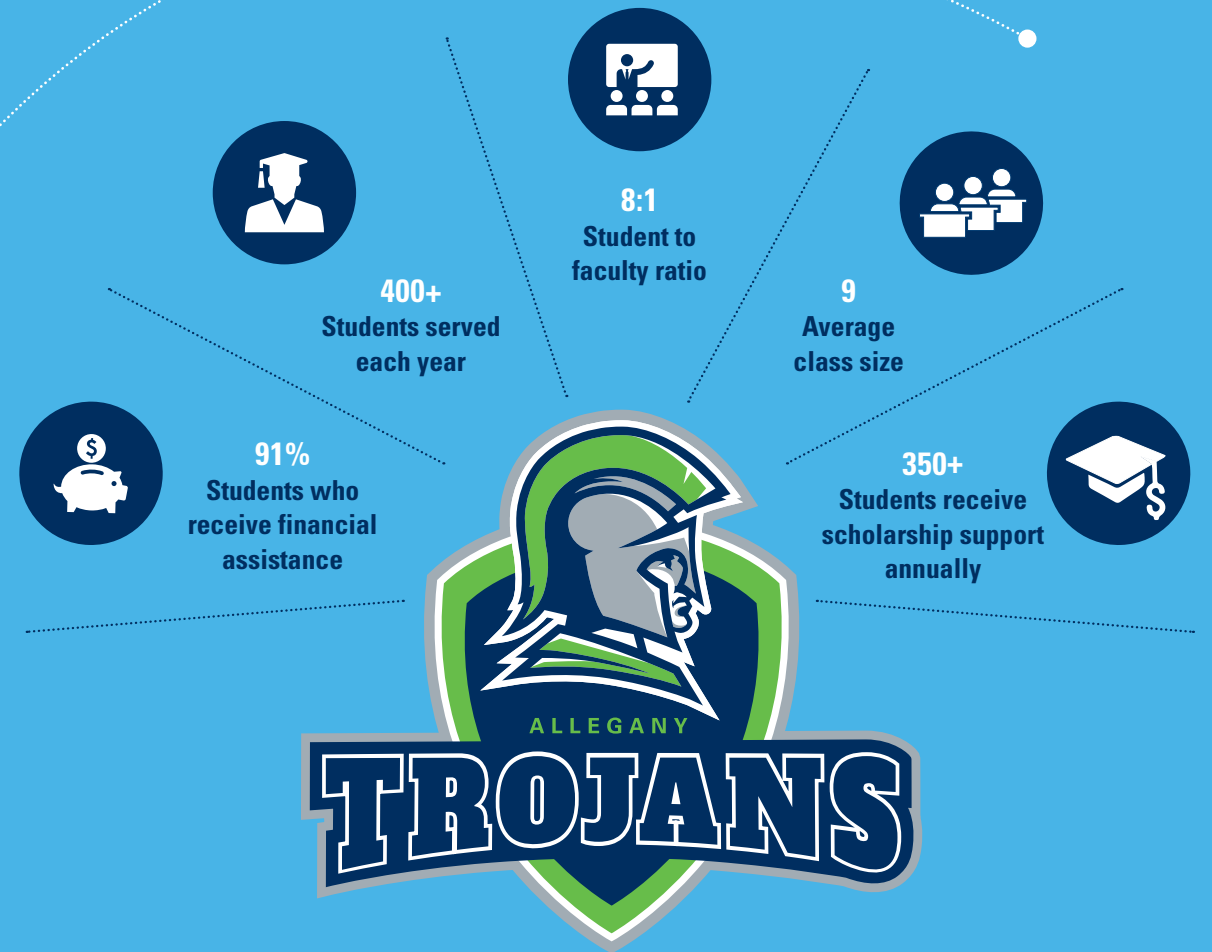
#### OTHER STATES

- Cedarville University (Ohio)
- DeVry University (Illinois)
- Kent State University (Ohio)
- Liberty University (Virginia)
- Shenandoah University (Virginia)
- Strayer University (District of Columbia)
- University of the District of Columbia
- University of Phoenix (Online)

# SERVING THE *Local Community*



*Let ACM guide you on your journey to success.*



**TUITION & FEES FOR 2022-23: \$11,242**

Students attending the Bedford County Campus may be eligible to receive tuition discounts:

**PENNSYLVANIA STATE SUBSIDY**

\$70 off or more per credit hour by assistance received through the Commonwealth of Pennsylvania

**FREE TUITION FOR EARLY COLLEGE STUDENTS**

The generosity of ECM Insurance Group and other Educational Improvement Tax Credit (EITC) partners will enable early college students registered through the Bedford County Campus of ACM to take early college classes tuition free during fall and spring semesters. Registration fees and textbooks will also be covered by this educational investment.

# YOUR SUCCESS • is our goal.

**ACM Bedford County Campus offers resources and opportunities to help you grow and succeed.**

- **Admissions Assistance**
- **Advising**
  - Academic Planning
  - Career Services
  - Educational Coaching
  - Transfer Advising
- **Community Activities**
- **Convenient Online Bookstore**
- **Crisis Counseling**
- **Digital Library and Online Research Assistance**
- **Disability Services**
- **Field Trips and Excursions**
- **Financial Aid Counseling**
- **In-Person and Online Tutoring**
- **IT Helpdesk**
- **Placement Testing**
- **Scholarships**
- **Study Groups**



## FINANCIAL AID and scholarships



**91% of students receive financial assistance**



**Over \$1 Million in scholarships awarded annually by the Bedford County Regional Education Foundation and the ACM Foundation**



**Each student can receive up to \$2,500 in scholarships every year**



**PELL GRANTS, STATE GRANTS, and other assistance opportunities available.**



The Bedford County Regional Education Foundation has provided nearly \$2.1 million in scholarship and financial assistance to Bedford County Campus students since 1993. The Foundation makes college more affordable through:

- Scholarships
- Tuition Assistance
- Emergency Book Funding (in partnership with the United Way of Bedford County)
- Early College Tuition Assistance and Book Funding (made possible by EITC donors)

“

**“I feel incredibly honored that you believe in me enough to award me this financial gift. Paying for college is no easy task, so this will go a long way in helping me achieve my goals.”**



**Mary Hood, Robert D. and Bessie Brantner Sponsler Memorial Scholarship recipient**

# PENNSYLVANIA TRAINING CENTER

*for Workforce Development and  
Continuing Education*

The Pennsylvania Training Center for Workforce Development and Continuing Education, a partnership between Allegany College of Maryland and the Bedford County Technical Center, provides training opportunities for individuals and employers in the Southern Alleghenies region.

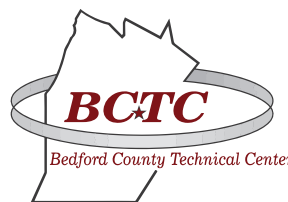
**The partnership offers a wide array of training and lifelong learning programs:**

- Automotive Service Certifications
- Design and Technology
- Healthcare Certifications
- Hospitality Certifications
- Online Courses
- Personal Enrichment
- Professional Development
- Skill Trades

**For more information, call 814-624-4814.**



ALLEGANY COLLEGE  
of MARYLAND  
BEDFORD COUNTY CAMPUS



# SEE FOR *yourself*

## Ready to #EngageYourFuture?



**One-on-One Tours**



**Open Houses**



**Sit In On A Class**



**Virtual Tours**

Learn more about our visit options at [allegany.edu/visit-bcc](http://allegany.edu/visit-bcc) or call 814-652-9528.

- Submit online ACM Application for admission
- Apply for financial aid (FAFSA)
- After acceptance, set-up & check your ACM student email regularly
- Complete online ACM Scholarship Application
- Request final high school transcript/GED certificate be sent to the Admissions Office
- Meet with an Academic Advisor
- Schedule Placement Test (discuss with Academic Advisor prior to scheduling)
- Make payment arrangements with the Business Office to avoid deregistration
- Attend New Student Orientation
- Purchase course books and materials via the ACM online Bookstore
- Contact the Bedford Foundation Office about additional financial support opportunities

