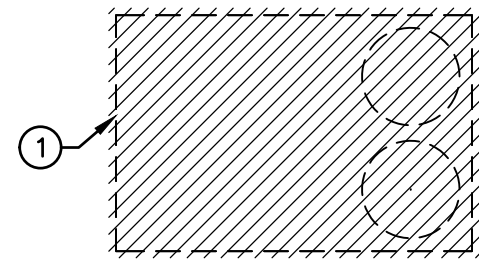
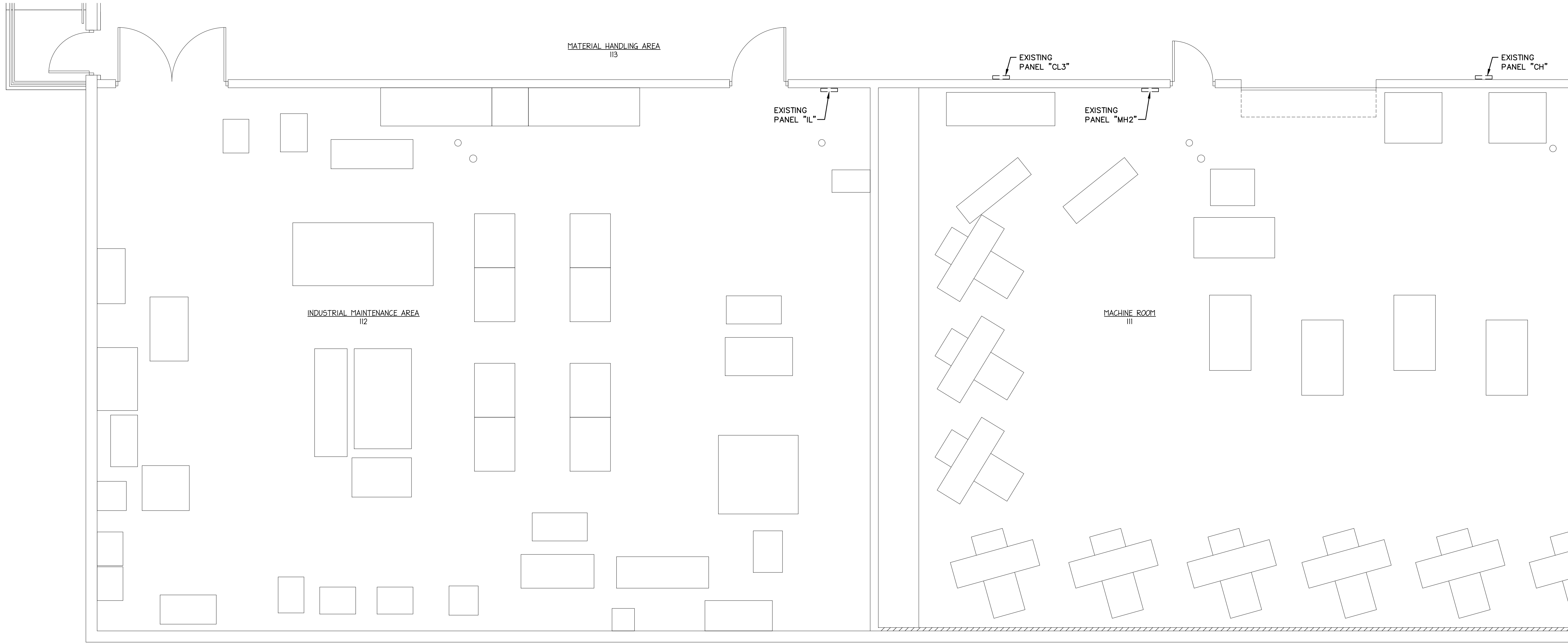


May 01, 2025 - 10:26am T:\Projects\2024\24-141 - ACM Makers Space Dust Collection and Weld Fume Extraction Systems\WOOD SHOP\Drawings\24-141 - E3.dwg



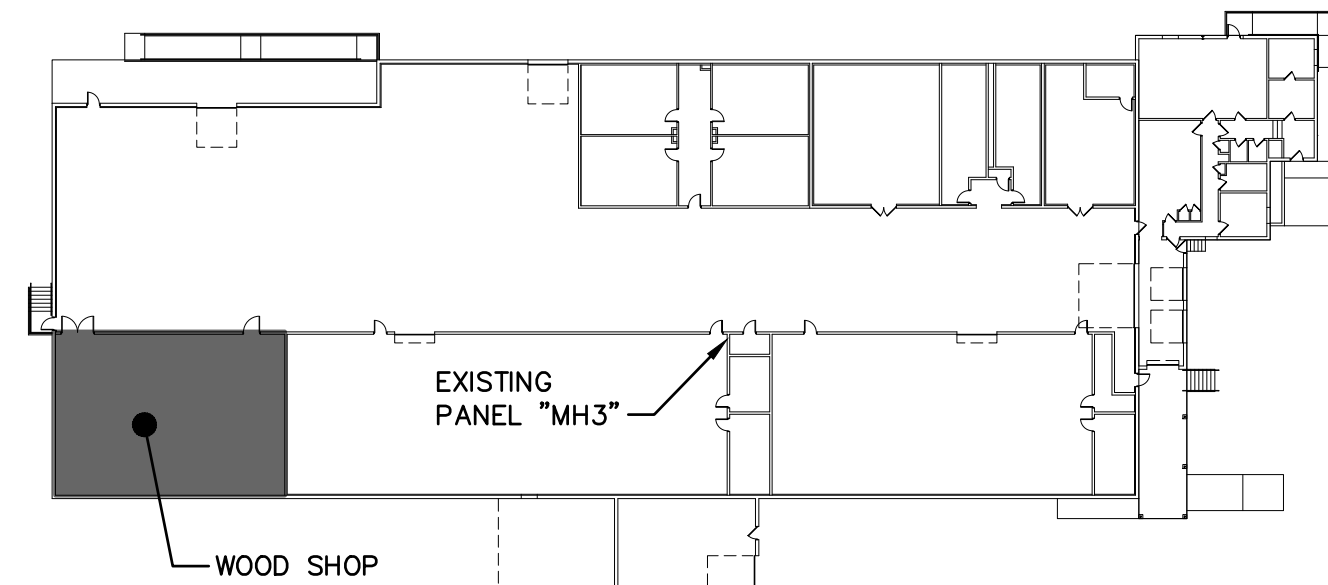
## PARTIAL FLOOR PLAN - WOOD SHOP - ELECTRICAL DEMOLITION

SCALE: 1/4" = 1'-0"

### DRAWING NOTES

- ① EXISTING RTU REMOVED BY H.C., E.C. TO DISCONNECT POWER WIRING, REMOVE BACK TO SOURCE AND RENDER CIRCUIT DEAD.

(APPLY TO THIS DRAWING ONLY)



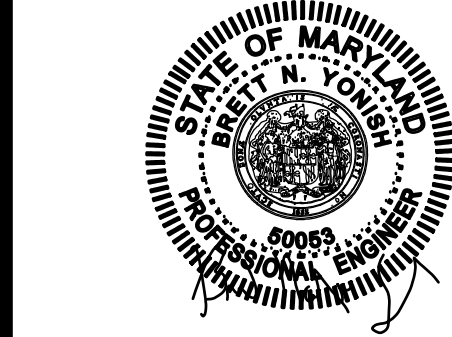
### KEY PLAN

NOT TO SCALE

#### PROFESSIONAL CERTIFICATION

I HEREBY CERTIFY THAT THESE DOCUMENTS WERE PREPARED OR APPROVED BY ME, AND THAT I AM A DULY LICENSED PROFESSIONAL ENGINEER UNDER THE LAWS OF THE STATE OF MARYLAND, LICENSE NO. 50053, EXPIRATION DATE: 10-13-2026

*Brett N. Yonish*  
BRETT NICHOLAS YONISH DATE 05-01-2025



### PARTIAL FLOOR PLAN - ELECTRICAL DEMOLITION

DUST COLLECTION & WELD FUME EXTRACTION  
WOOD SHOP & WELDING AREA  
FOR  
ALLEGANY COLLEGE, LAVALLE BUILDING  
37 LANE AVENUE, LAVALLE, MARYLAND 21502



BRETT N. YONISH, P.E.  
CHRISTOPHER G. ALBRIGHT, P.E.

541 MAIN STREET  
WINDBER, PA 15963  
(814) 467-6877

#### REVISIONS

| MARK | BY | DATE |
|------|----|------|
|      |    |      |
|      |    |      |
|      |    |      |
|      |    |      |

DATE:  
5/01/2025

DRAWN BY:  
C. A. M.

CHECKED BY:  
B. N. Y.

PROJECT NO.  
24-141

DRAWING NO.

E-3