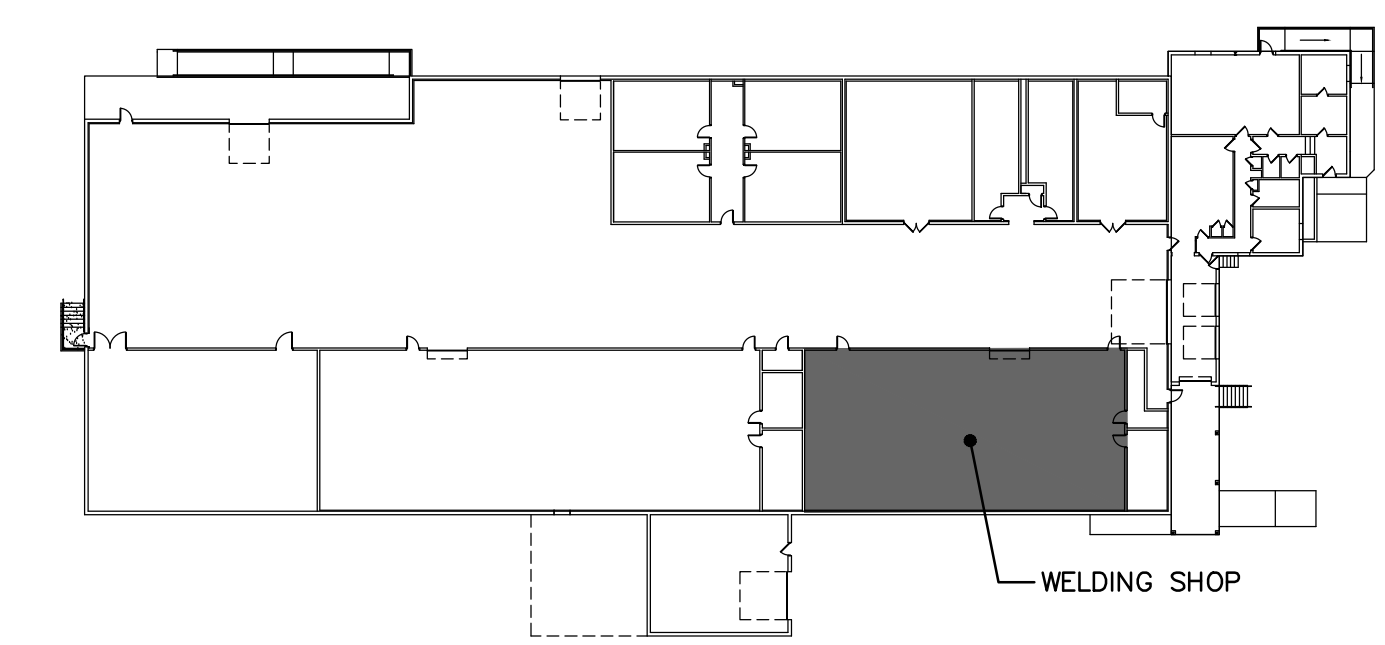


PARTIAL FLOOR PLAN - WELDING SHOP - ELECTRICAL DEMOLITION
SCALE: 1/4" = 1'-0"

DRAWING NOTES (APPLY TO THIS DWG. ONLY)

- ① E.C. SHALL ELECTRICALLY DISCONNECT EXISTING WELDING BOOTH EXHAUST FAN AND ALL ASSOCIATED ELECTRICAL COMPONENTS. REMOVE CIRCUIT WIRING/CONDUIT AS REQUIRED. MAINTAIN CIRCUIT FOR WELDING BOOTH RECEPTACLE AND LIGHT.



KEY PLAN
NOT TO SCALE

PROFESSIONAL CERTIFICATION
I HEREBY CERTIFY THAT THESE DOCUMENTS WERE PREPARED OR APPROVED BY ME, AND THAT I AM A DULY LICENSED PROFESSIONAL ENGINEER UNDER THE LAWS OF THE STATE OF MARYLAND, LICENSE NO. 50053, EXPIRATION DATE: 10-13-2026
Brett N. Yonish
BRETT NICHOLAS YONISH DATE 02-04-2025

PARTIAL FLOOR PLAN - WELDING - ELECT. DEMO

**WELD FUME EXTRACTION
WELDING ROOM**
FOR
ALLEGANY COLLEGE, LAVALLE BUILDING
37 LANE AVENUE, LAVALLE, MARYLAND 21502

**East Hills
Engineering
Associates**
A LIMITED LIABILITY COMPANY

BRETT N. YONISH, P.E.
CHRISTOPHER G. ALBRIGHT, P.E.
541 MAIN STREET
WINDBER, PA 15963
(814) 467-6877

REVISIONS		
MARK	BY	DATE

DATE: 02/04/2025	DRAWING NO. E-2
DRAWN BY: J.L.L. J.L.L.	
CHECKED BY: B.N.Y.	
PROJECT NO. EHEA 24141	

February 04, 2025 - 11:18am T:\Projects\2024\24-141 - ACM Advers Spore Dust Collection and Weld Fume Extraction Systems\WELDING SHOP\Drawings\24-141 - E2.dwg