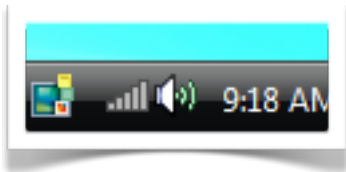


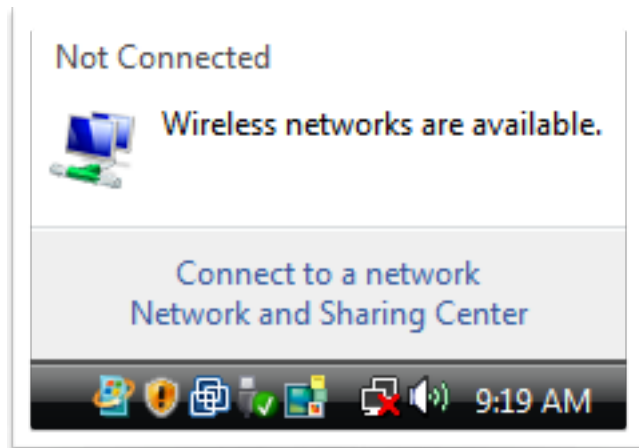
Allegany College of



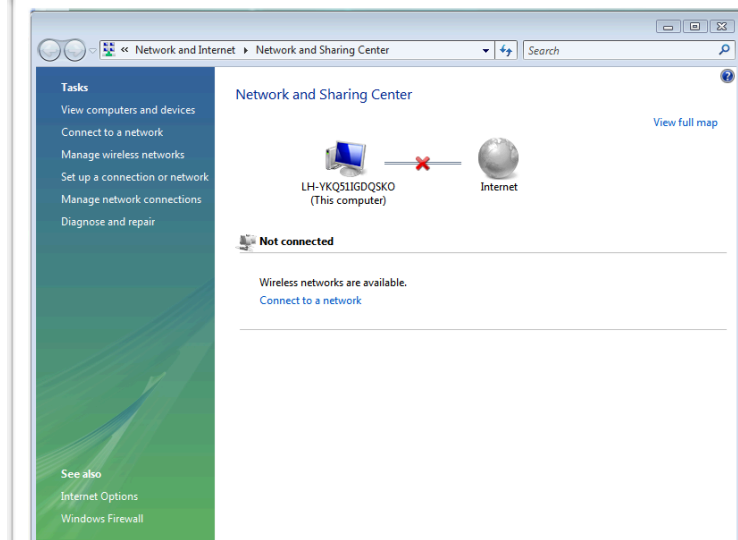
Maryland Wireless Network



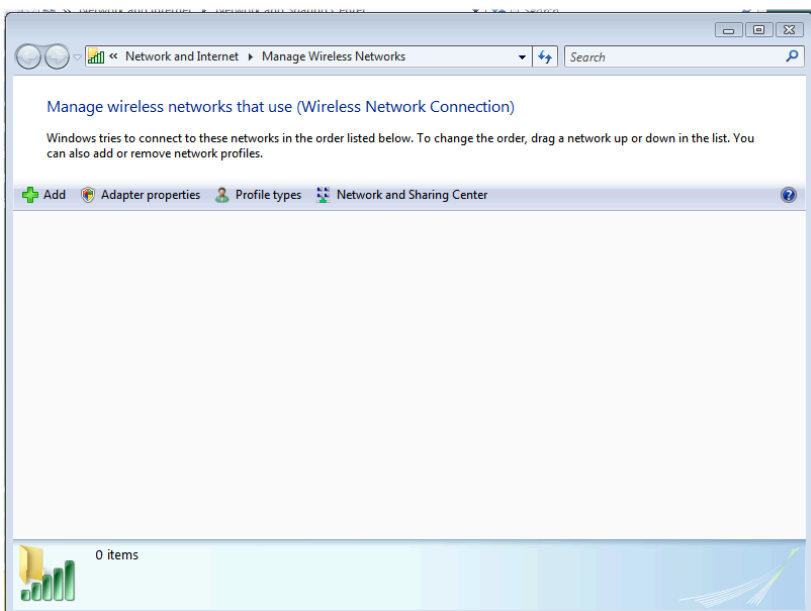
Windows Vista



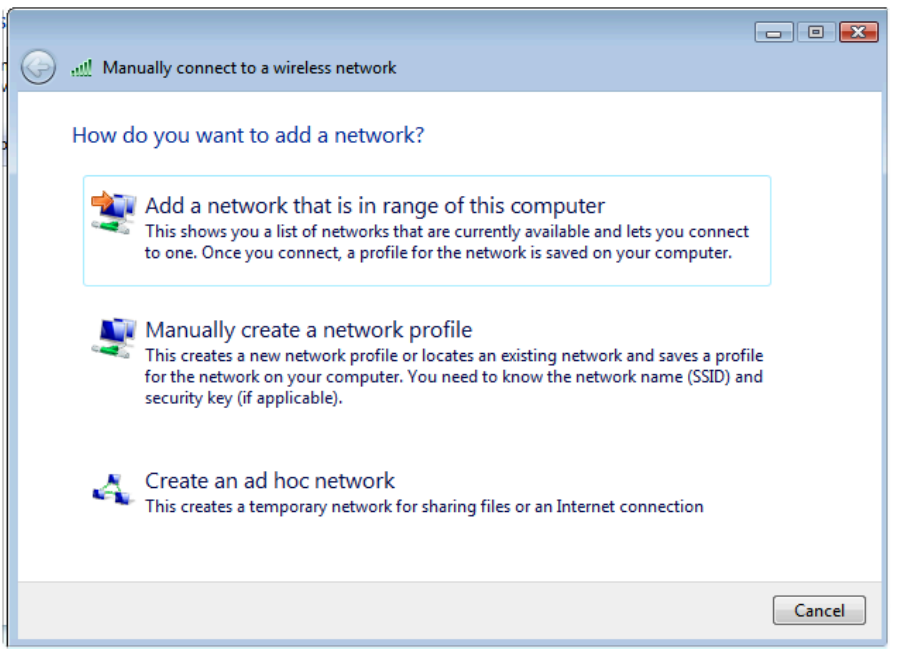
These instructions are for Windows Vista machines in which Windows is managing the wireless network connection. Vista should see the ACM SSID when clicking on the wireless icon in the task bar notification area. Click on the "Network and Sharing Center" link.



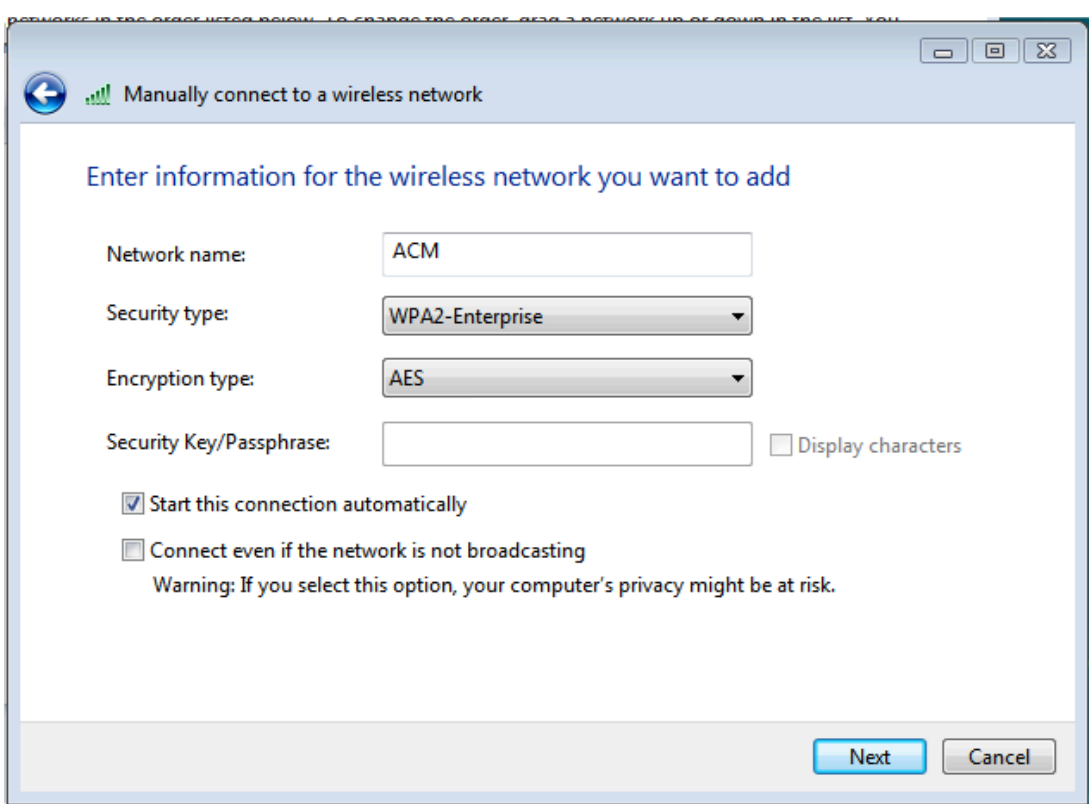
You should see a link called "Manage Wireless Networks" Click on this tab.



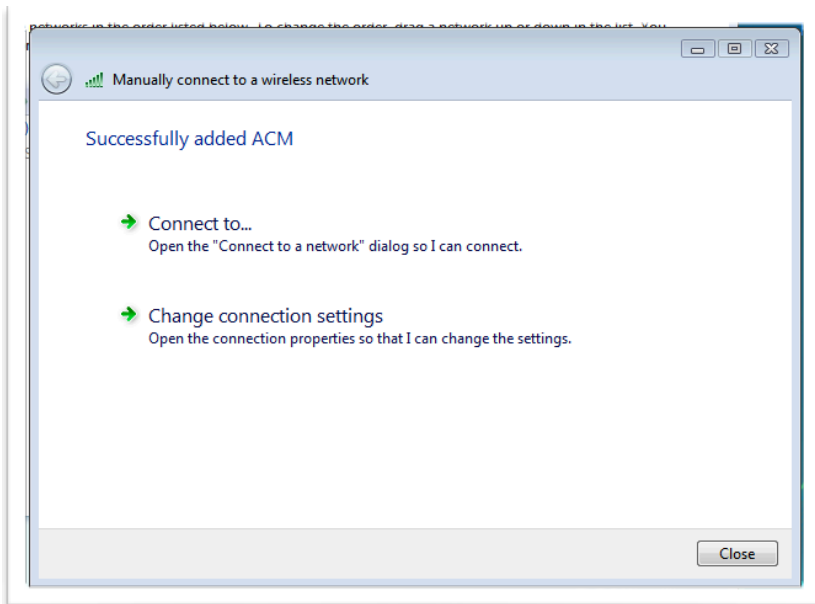
Click Add



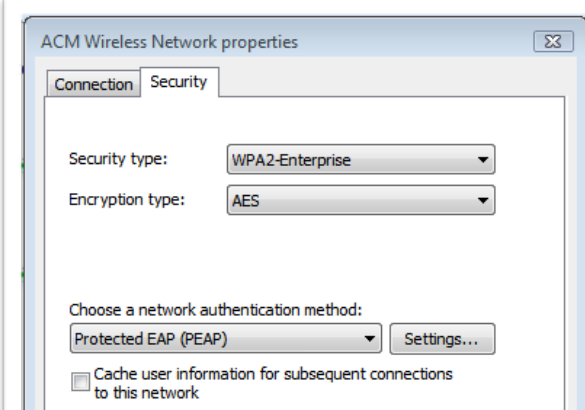
Choose "Manually create a network profile"



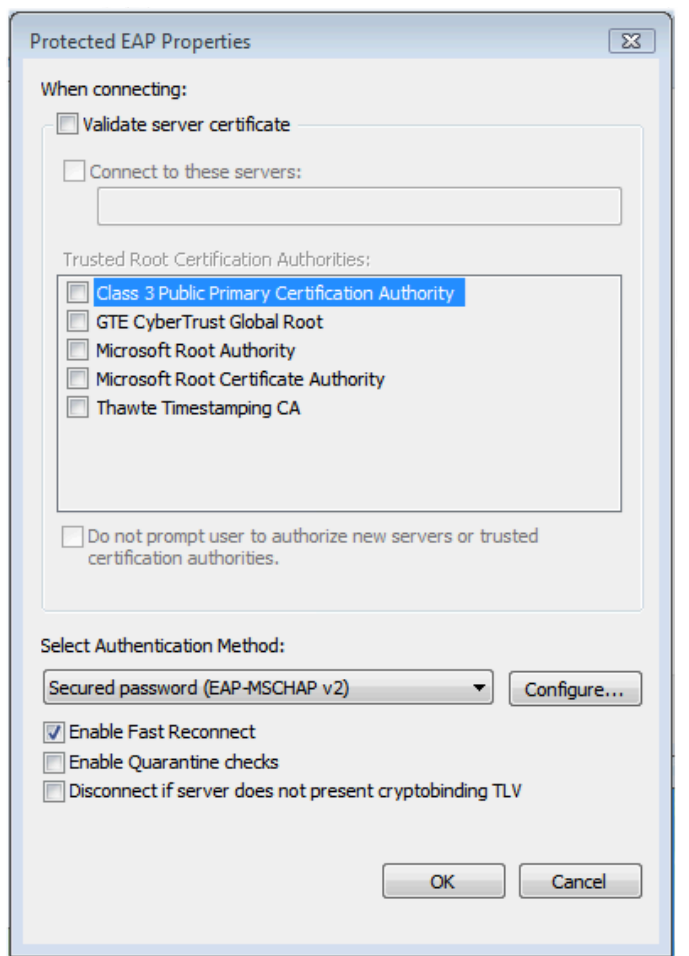
Put ACM in as the "Network name". Choose "WPA2-Enterprise" as the Security Type. Choose "AES" as the Encryption Type. Click Next.



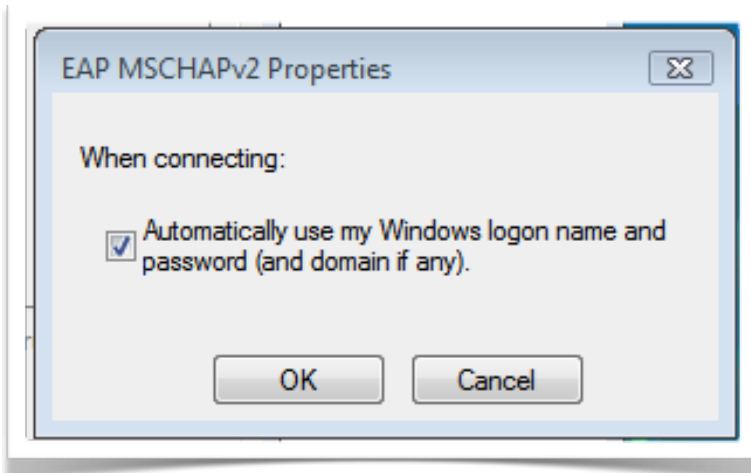
You will see this screen next. Click "Change connection settings".



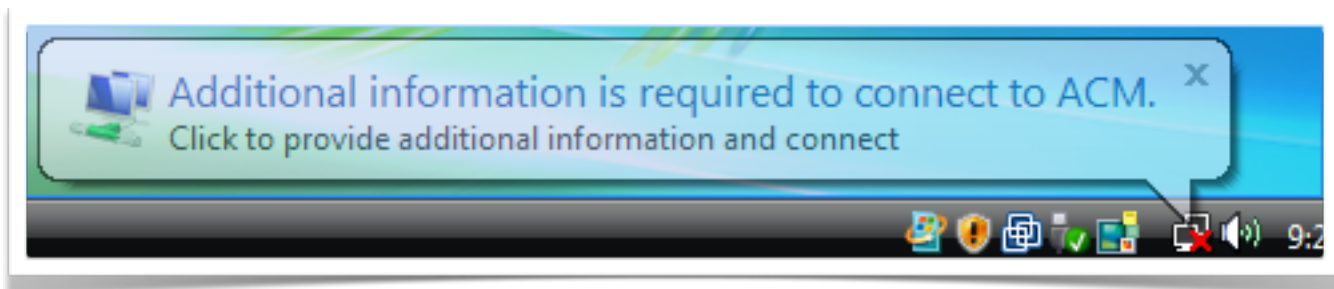
Choose the Security tab. Make sure PEAP is chosen as the authentication method. Click on Settings. It would also be a good idea at this time to uncheck the box that says "Cache user information for subsequent connections to this network".



Uncheck "Validate server certificate".
Make sure Authentication Method is set to EAP-MSCHAP v2. Click on Configure.



Uncheck the box that says "Automatically use my Windows logon name and password".



You should now see this pop-up when trying to connect to ACM. Fill in your user name and password. Leave the domain blank.

If you need further assistance, you may find it here.

Students: <http://student.allegany.edu>
(or call 301-784-5444)

Faculty and staff:
<http://helpdesk.allegany.edu> (or call
campus extension 5444)